

Find area using the attached floor plan (show all your work):

Part I

1) Find the area of bedroom #1 \_\_\_\_\_; bedroom #2 \_\_\_\_\_;  
And total living space of the home \_\_\_\_\_

2) The carpet is badly worn and needs to be replaced. How much carpet do you need to purchase? (Floors without carpet are the kitchen and bathroom). Show the answer in terms of square feet then convert the answer to square yards.

3) Select carpet from an advertisement and calculate the cost, assume you do not need a pad. Be sure to include the cost of installation. Attach the ad you used for your answer.  
Cost = \$ \_\_\_\_\_.

4) The house sits on a lot that is 52 feet wide and 58 feet deep. It is time to put grass seed down and plant a lawn. The bag of seed says it can cover up to 150 square feet, how many bags will you need?

Part II

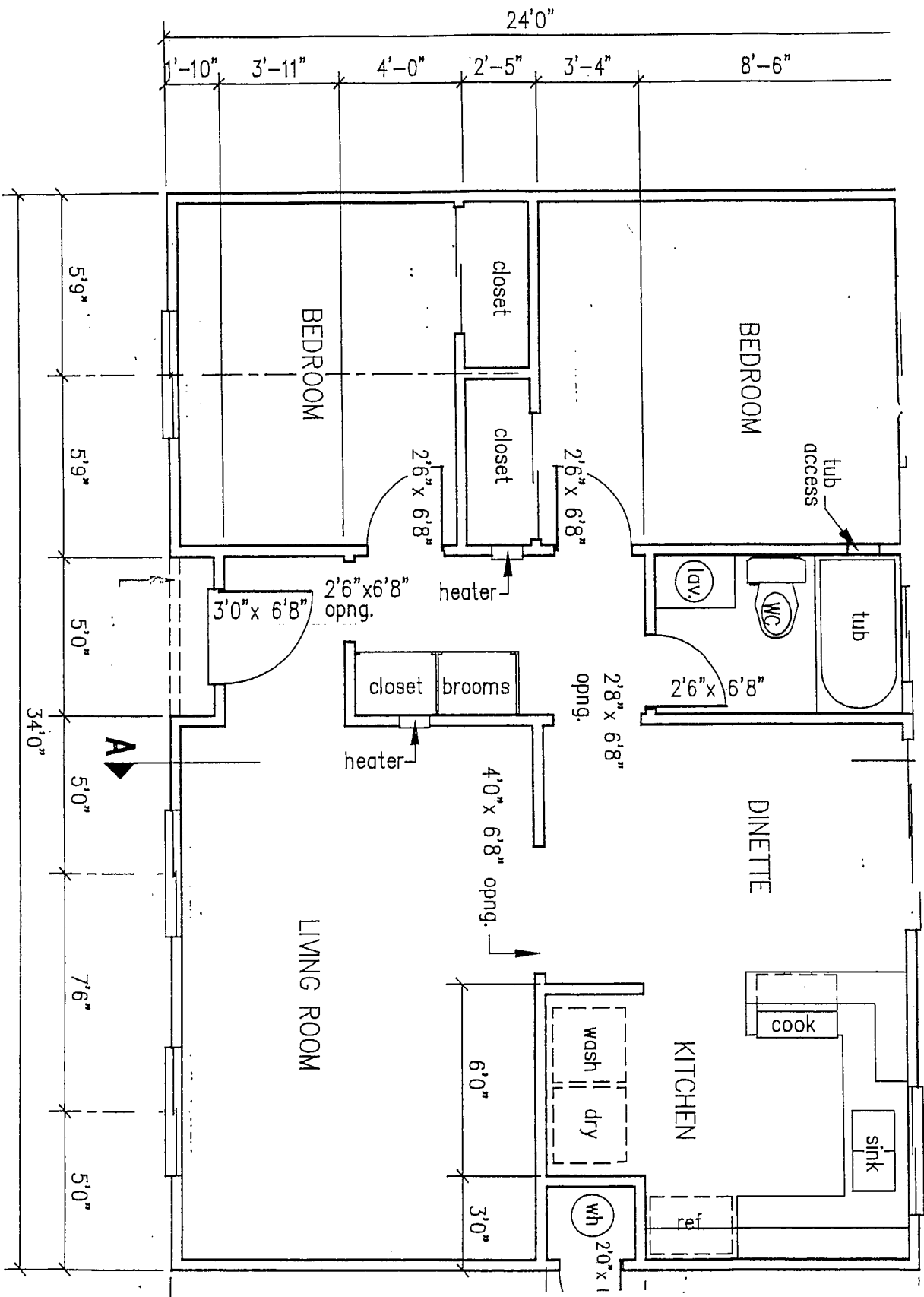
Answer these same questions using your own individual floor plan.

1) Find the area of bedroom #1 \_\_\_\_\_; bedroom #2 \_\_\_\_\_;  
And total living space of the home \_\_\_\_\_

2) The carpet is badly worn and needs to be replaced. How much carpet do you need to purchase? (Floors without carpet are the kitchen and bathroom). Show the answer in terms of square feet then convert the answer to square yards.

3) Select carpet from an advertisement and calculate the cost, assume you do not need a pad. Be sure to include the cost of installation. Attach the ad you used for your answer.  
Cost = \$ \_\_\_\_\_.

4) The house sits on a lot that is \_\_\_\_\_ feet wide and \_\_\_\_\_ feet deep. It is time to put grass seed down and plant a lawn. The bag of seed says it can cover up to 150 square feet, how many bags will you need?



# Floor Plan

SQUARE FEET

identical construction company

© s. socha

framing kit #104