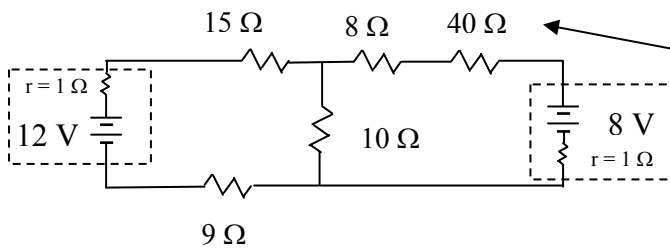
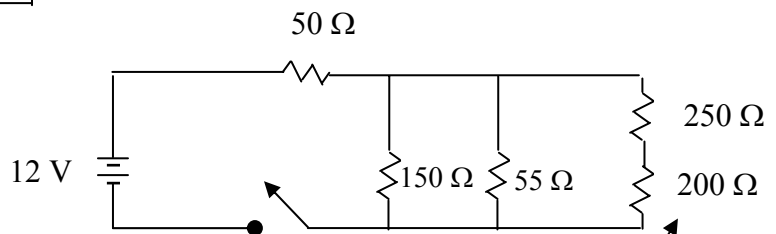
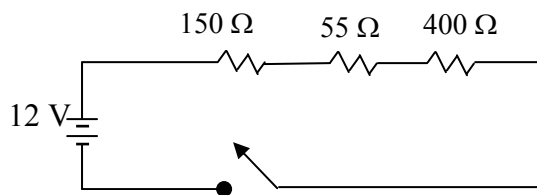
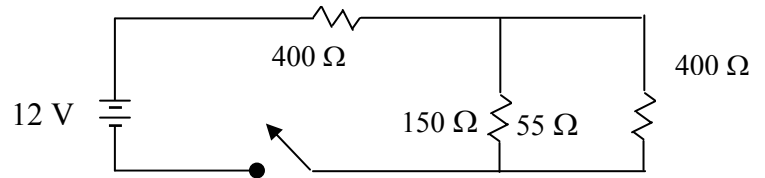
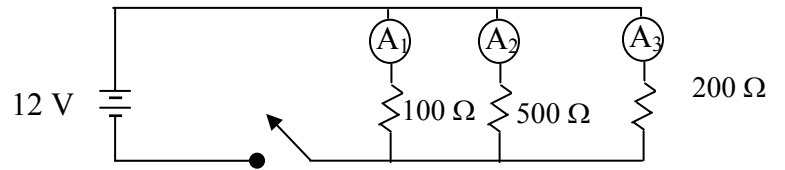
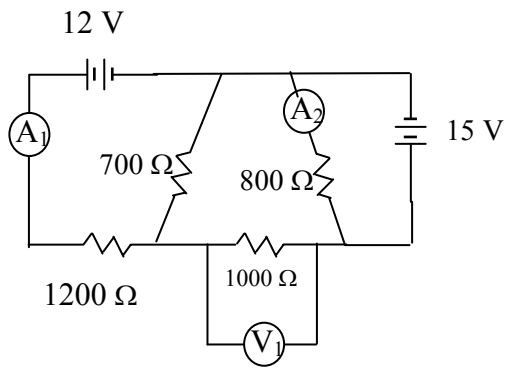


AP Physics C Review 16 DC Circuits

- Find the current and voltage drop across each resistor in each circuit.



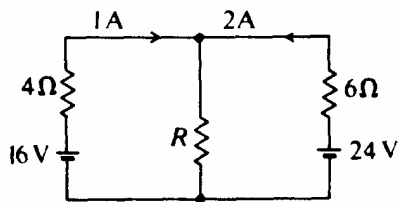
Find the Power through these resistors



- Find:
 V_1 :
 A_1 :
 A_2 :

- Find the resistance of 20 km of copper wire that has a cross sectional area of 0.8 cm^2 .

- How long does a 1.2 cm^2 cross-sectional copper wire need to be to have a resistance of 200Ω ?



- In the circuit shown above, what is the resistance R ?