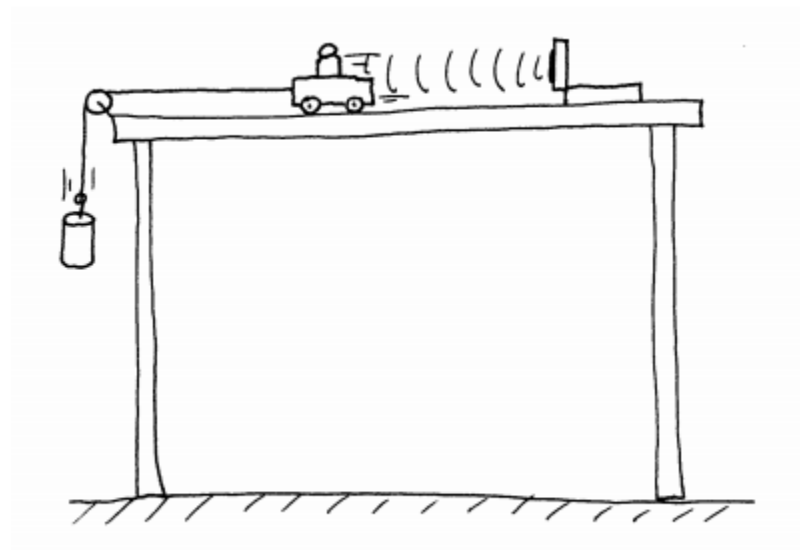


# Newton's 2<sup>nd</sup> Law Inquiry

The purpose of this inquiry is to verify Newton's 2<sup>nd</sup> law.

Things to consider:

- Be sure your conclusion is grounded in data, lots of data, lots of "good" trials.
  - Data can be measurements and/or graphs
- You can use the CBR motion detector that connects to the graphing calculator (see figure 1)
  - Make sure the CBR "sees" the cart.
- Minimize the frictional forces
- Make sure you only vary one thing at a time.
- Use consistent precision.
- Don't break anything ☺.



**Figure 1. Experimental Setup**